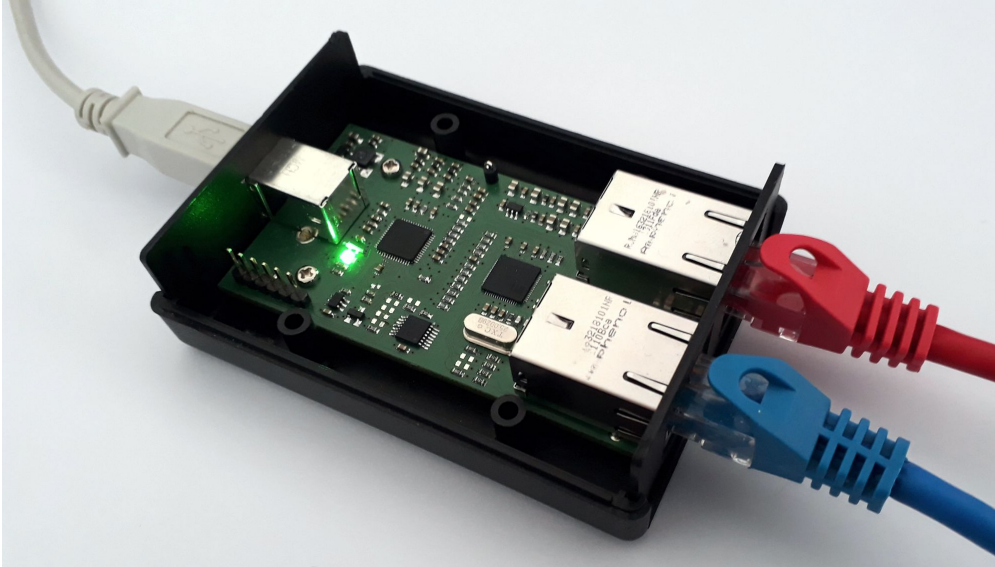


## NetSHARK

NetSHARK is a Wireshark-compatible Ethernet packet capture tool that simplifies debugging of TCP/IP connectivity.



### Main Features

- Ethernet packet capture tool
- Ethernet traffic sniffing (port mirroring)
- Compatible with Wireshark 3+
- 2 x RJ-45 ports
- 1 x USB 2.0, type B connector
- USB-powered device
- Windows/Linux drivers
- 12-month hardware warranty

### Ordering Information

NSHARK-100U

NetSHARK-100U  
Ethernet 10/100 packet capture tool